

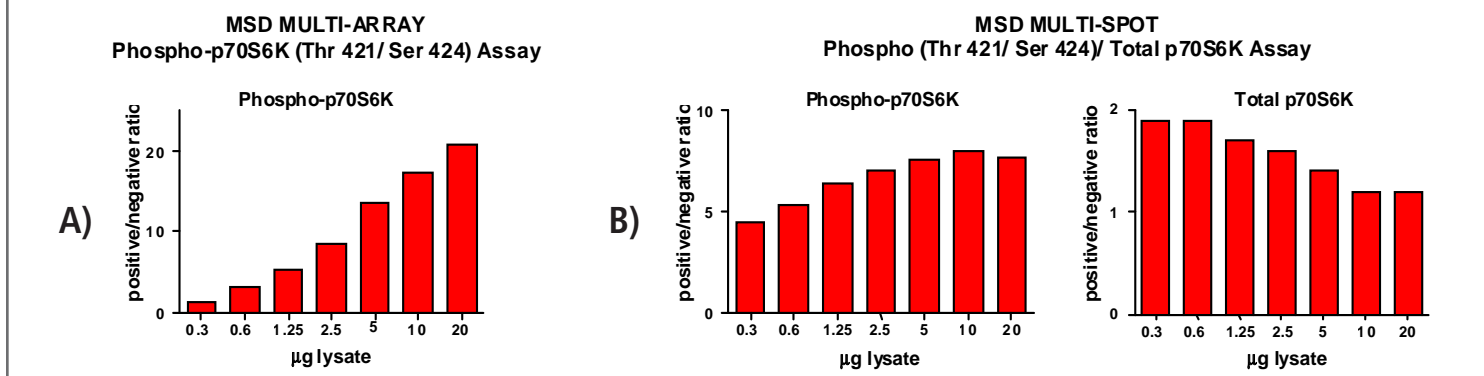
Meso Scale Discovery® Whole Cell Lysate Set

Phospho-p70S6K (Thr 421/ Ser 424)

Catalog No:	C11DC-1
Contents:	2 x 100 µg MSDLY0009 pp70S6 Kinase Negative Cell Lysate Cell lysate from growing HEK293 cells treated with 1 µM rapamycin for 3 hours to inhibit p70S6K phosphorylation 2 x 100 µg MSDLY0010 pp70S6 Kinase Positive Cell Lysate Cell lysate from serum-deprived HEK293 cells treated with 1 µM PMA for 30 minutes to stimulate p70S6K phosphorylation
Concentration:	2 mg/mL in MSD® Complete Tris Lysis Buffer
Volume:	2 vials (50 µL) negative lysate 2 vials (50 µL) positive lysate
Preparation:	Following cell treatment, HEK293 cell lysates were prepared on ice in MSD Complete Tris Lysis Buffer. Cell debris was cleared by centrifugation.
Storage:	Lysates should be stored at -80°C. Lysates will retain approximately 90% of activity after a single round of freeze thaw if handled properly (thawed on ice and immediately refrozen in smaller aliquots).
Quality Control:	Lysates have been tested for performance in Western Blot and MSD Assays.

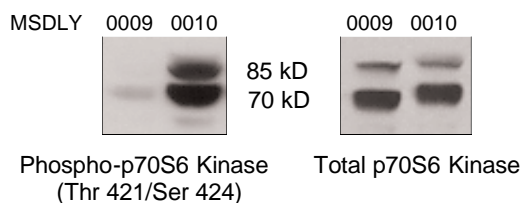
MSD MULTI-SPOT Assay Results

Figures A and B (below) illustrate typical titrations for MSDLY0009 (pp70S6K negative) and MSDLY0010 (pp70S6K positive) cell lysates. Figure A depicts the MSD MULTI-ARRAY Phospho-p70S6 Kinase (Thr 421/ Ser 424) Whole Cell Lysate Kit; Figure B depicts the MSD MULTI-SPOT Phospho (Thr 421/ Ser 424) /Total p70S6 Kinase Whole Cell Lysate Kit. The results are presented as a ratio of the signals obtained with pp70S6K positive and pp70S6K negative cell lysates. In both assays, the phospho-p70S6K signal ratios increase with the amount of lysates. The signal ratios for total p70S6K in the Phospho/Total p70S6K Assay remain at a constant level close to one throughout the titration. The representative results shown below are for demonstration purposes only and individual results may vary depending upon experimental application.



Traditional Western Blot Results

MSDLY0009 and MSDLY0010 whole cell lysates (20 µg each) were analyzed by Western Blot with Phospho (Thr 421/ Ser 424)-specific and Total p70S6 Kinase antibodies.



FOR RESEARCH USE ONLY. NOT FOR USE IN DIAGNOSTIC OR THERAPEUTIC PROCEDURES.

20199-v1-2010Feb